

KENT COUNTY HEALTH DEPARTMENT 2017 Annual Report

*To serve, protect and promote a healthy
community for all.*



HEALTH
DEPARTMENT
Caring today for a healthy tomorrow

Where to Find Us

KCHD's Main Clinic and Administrative Offices are centrally-located in Kent County, at 700 Fuller Avenue NE, Grand Rapids. This location near I-196 serves as headquarters for most of our public health workers. On the same campus, you will find our state-of-the-art animal shelter. Three satellite clinics provide easy access to many clinical services for residents county-wide.

(616) 632-7100

www.accessKent.com/Health



1. Main Clinic
700 Fuller Avenue NE
Grand Rapids, MI 49503



2. Animal Shelter
740 Fuller Avenue NE
Grand Rapids, MI 49503



3. Sheldon Clinic
121 Franklin SE
Grand Rapids, MI 49507



4. North County Clinic
4388 14 Mile Road NE
Rockford, MI 49341



5. South Clinic*
4700 Kalamazoo Avenue SE
Kentwood, MI 49508

GENERAL INFORMATION

Toll-free from 616 or 231 area codes
Administration/Director's Office
Animal Shelter
Community Clinical Services
Community Wellness
Environmental Health
Kent County Medical Examiner's Office
Communicable Disease/Epidemiology
Personal Health Services
WIC/Vaccines

(616) 632-7100
(888) 515-1300
(616) 632-7280
(616) 632-7300
(616) 632-7203
(616) 632-7058
(616) 632-6900
(616) 632-7247
(616) 632-7228
(616) 632-7171
(616) 632-7200

Health Department Leadership

Administrative Health Officer: Adam London, RS, MPA
Deputy Administrative Health Officer: Teresa Branson, MHA
Medical Director: Mark Hall, MD
Finance Director: Gail Brink, CPA
Community Clinical Services Director: Christopher Bendekgey
Community Wellness Director: Joann Hoganson, RN, MSN
Environmental Health Director: Sara Simmonds

2017 Community Health Advisory Committee

Commissioner Shana Shroll (Chair)

Commissioner Emily Brieve

Steve Alsum

Nicolas Fletcher

Paul Haan

Dr. Michael Kramer

Ron Koehler

Nola Norton

Dr. Lori Pearl-Kraus

Savator Seldon-Johnson

Dr. Mark Swan



2017 Community Outreach Maranda Park Party

Administration

Administration of Department
Academic Health Department
Central Supply
Emergency Preparedness
Epidemiology and Communicable
Disease

Health Equity and Social Justice
Healthy Kent
Finance/Information Technology
Quality Improvement and
Performance Management
School Illness Reporting

Oversight and planning starts in Administration. Epidemiologists, program managers, communications, emergency preparedness, finance and information technology make up this division. Administration sets quality improvement goals and establishes the overall direction and vision of the Kent County Health Department.

PFAS and Contaminated Ground Water in Northern Kent County

In April of 2017, the Kent County Health Department (KCHD) became aware of an investigation regarding contaminated groundwater in the Belmont area by the Michigan Department of Environmental Quality (MDEQ). In the months that have followed, the wells of more than 1000 homes have been tested for PFAS. MDEQ believes that the contamination was caused by waste dumped by Wolverine Worldwide (WWW) decades ago. WWW agreed to provide testing, bottled water and, in some cases, whole house filtration systems to impacted residents while the investigation continues.

The Kent County Health Department informed residents about their individual results. Working in cooperation with the Michigan Department of Health and Human Services (MDHHS) KCHD advised residents about the known health consequences of PFAS and ways to limit exposure.

KCHD organized and conducted two town hall meetings, bringing MDHHS, MDEQ and WWW to the table to answer resident's questions. KCHD has established a website and a regular newsletter that is emailed to more than 1000 subscribers.

KCHD and MDHHS are devising methodology to conduct the agency's largest ever health impact survey in the area.

KCHD's commitment to acting as an advocate for residents led the agency to seek federal help from the U.S. Environmental Protection Agency.



Administration



Opioid Task Force

The Kent County Opioid Task Force is a community collaboration originally organized by The Red Project with a major focus on distribution of Naloxone. Since the KCHD joined forces with The Red Project, we have expanded our focus to prevention and recovery while maintaining our work to reverse overdoses and decrease death by opioid overdose. This task force is strong because of the diverse members that have joined together to address the growing problem of opioids in our community. There are representatives from law enforcement, the courts, social service agencies, mental health, the major hospital systems, the school system, private treatment centers, and the Kent County Health Department. We meet every other month as a large group for reporting and information, and in the odd months, we meet in three work groups. These three work groups are diligently and effectively addressing prevention, overdose reversal, and treatment.



KCHD's Sexual Assault Prevention Action Team (SAPAT) and the Academic Health Department were selected as Model Practices by the National Association of County and City Health Officials (NACCHO). NACCHO honors outstanding local public health care programs and shares the information nationally.

The KCHD Emergency Preparedness Program was awarded the National Health Security Strategy Award for the Kent County Inclusive Preparedness Program that develops emergency preparation training for people with disabilities.

Sally Cory received the esteemed Susan G. Komen Powerfully Pink Award for her work in the Breast and Cervical Cancer Control and Navigation Program.

KCHD was also awarded an Excellence in Action Award from Kent County Board of Commissioners.

Community Clinical Services

School Immunization Reporting

Immunization Nurse Educator
In-services

Immunization Services

Public Health Clinics

Sexually Transmitted Infections & HIV
Clinic

Tuberculosis Control and Prevention

Vaccines For Children Program

WIC (Special Supplemental Food Program
for Women, Infants, and Children)

Breastfeeding Peer Counselor Program

Travel Immunizations

Lead Screening

Community Clinical Services provides immunizations, the Special Supplemental Nutrition Program for Women, Infants and Children (WIC), breastfeeding education, nutrition education, sexually-transmitted infection (STI) testing and much more. Counseling and assistance from a variety of programs are designed to prevent disease and promote good health.



The WIC program distributed over \$35,000 worth of Project FRESH vouchers to WIC families as part of the WIC Farmer Market Nutrition Program. This program allows WIC families to use these vouchers at local farmers markets to purchase fresh, locally grown, fruit and vegetables.

Additionally, the WIC program provided over 66,000 WIC appointments, which have resulted in over \$10,792,066 in local food purchases.

Because of a thorough investigation of a newly infected HIV positive case, the Personal Health Services Program was able to prevent a pregnant mother from passing HIV to her unborn child. Working with the State, KCHD lab, and community partners, PHS staff were able to order, process and receive prompt testing, which led to a quick diagnosis and referral into HIV care, thus preventing the transmission of HIV to the baby in utero .

Health in All Policies

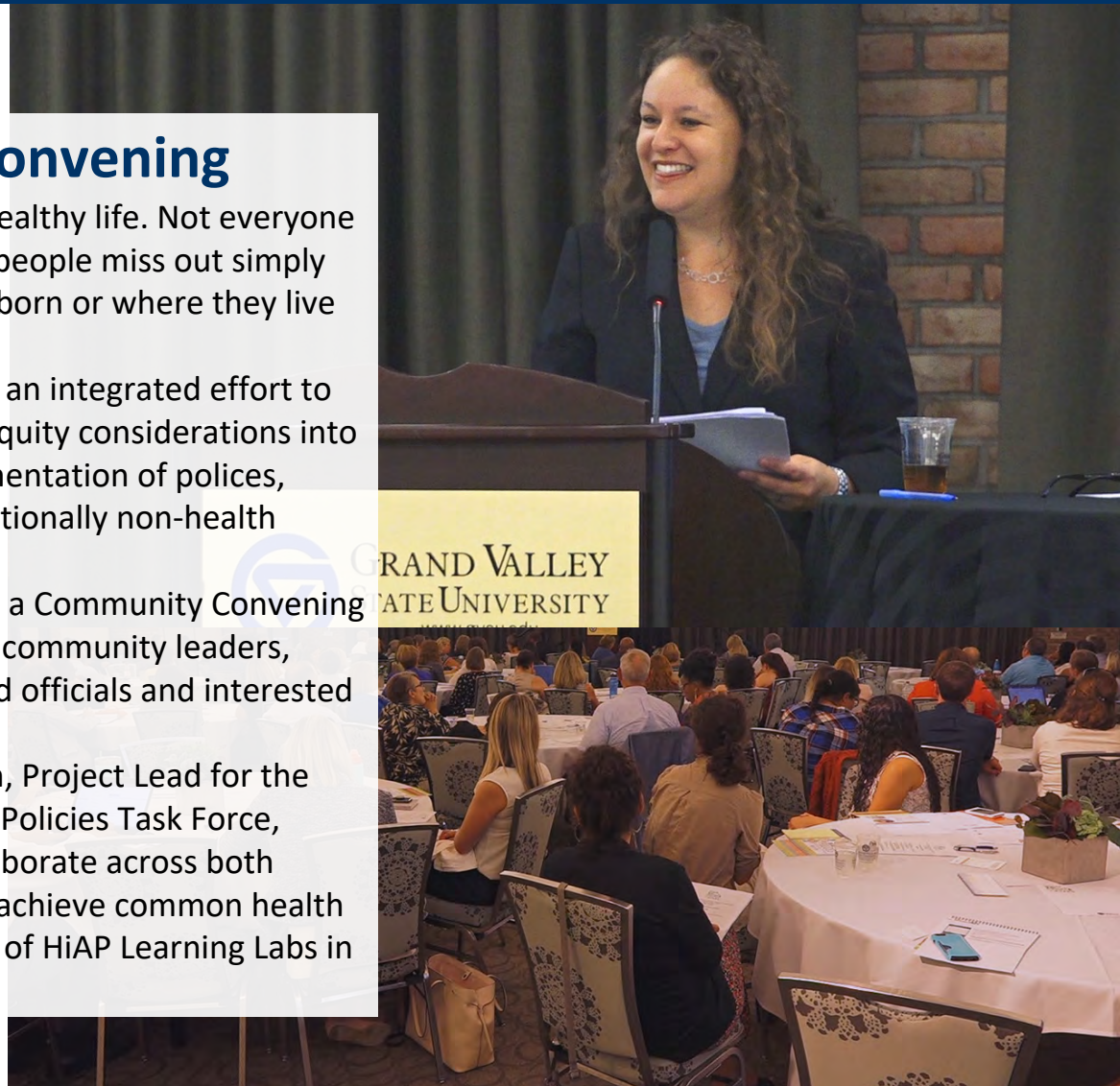
Community Convening

Everyone deserves to live a healthy life. Not everyone gets that opportunity. Many people miss out simply because of where they were born or where they live or where they work and play.

Health in All Policies (HiAP) is an integrated effort to bring health, wellbeing and equity considerations into the development and implementation of policies, programs and services of traditionally non-health related government systems.

In August of 2017, KCHD held a Community Convening introducing HiAP to over 100 community leaders, medical professionals, elected officials and interested stakeholders.

Keynote speaker, Julia Caplan, Project Lead for the California based Health in All Policies Task Force, emphasized the need to collaborate across both public and private sectors to achieve common health goals. KCHD will host a series of HiAP Learning Labs in 2018.



REACH Summit

40 partners attended the Racial and Ethnic Approaches to Community Health (REACH) Forward summit to recognize REACH Champions' efforts and relationships over the past three years. Attendees were brought together to identify ways to "REACH Forward" together to foster greater collaboration.

REACH is a national program of the Centers for Disease Control and Prevention (CDC). The goal is to reduce the major preventable chronic diseases such as heart disease, stroke and diabetes by increasing access to tobacco free environments, access to healthy foods, and opportunities for physical activity and chronic disease prevention, risk reduction and management especially among populations with health disparities.

Community Wellness

Maternal Infant Health Program

Strong Beginnings

Nurse Family Partnership

Children's Special Health Care Services

Vision & Hearing Screening

Infant & Child Death Counseling

NICU Follow-up Visits

Lead Poisoning Prevention

Refugee Health

Medicaid Enrollment and Coordination

Interconception Care Program

Community Nutrition

Life Skills

Obesity Initiative

Sexual Violence Prevention

Substance Use Disorders and Prevention

Teen Pregnancy Prevention

Women's Health Network

Community Wellness builds healthy foundations for youth and families in Kent County. Nurses, dietitians, social workers, clerks, community health workers, public health educators and vision and hearing technicians provide services to a diverse population throughout Kent County. Staff members work with parents and children, often in their homes, to make sure they are leading healthy lives.

Nurse Family Partnership

This story comes to us from Rachel a nurse in the Community Wellness Division of KCHD.

I started seeing a client early in pregnancy who was completing 9th grade in high school, at 14 years old, with no plans to finish school once the baby was born. Throughout conversation the client explained to me that her mother left it up to her and "doesn't care" if she goes back or not. I was able to present to her alternative high school options and help guide her through how to arrange this for the next year.

This client now has a 6-month old baby and is working on graduating from high school.



Responding to Community Need



Take The Shot

Searching for a new and inexpensive way to raise flu vaccination awareness among men, KCHD reached out to the Grand Rapids Griffins. A short video was to be featured on the Griffins scoreboard during intermissions. The video was reedited by KCHD staff into a 30 second TV commercial encouraging people to "Take the Shot."

A simple handshake agreement with WZZM-TV, WXMI TV and WOOD TV ensured that the broadcasters would air the spot as part of their public service obligations to the Federal Communications Commission. No advertising fee was paid by KCHD.

The video aired countless thousands of times in a 90-day campaign across all dayparts providing ample opportunity for the 1.79 million people in the viewing area to receive the message hundreds, if not thousands of times.

The broadcasters have expressed gratitude for having a locally produced public service announcement and have all entered into a second year of airing the spot.



KCOTF Kent County Opioid Task Force

The Kent County Opioid Task Force is a community collaboration originally organized by The Red Project with a major focus on distribution of Naloxone. Since KCHD joined forces with The Red Project, the focus has expanded to prevention and recovery while continuing to work to reverse overdoses and decrease death by opioid overdose. This task force is strong because of the diverse members who have joined together to address the growing problem of opioids in our community. There are representatives from law enforcement, the courts, social service agencies, mental health, the major hospital systems, the school system, private treatment centers, and the KCHD. The task force meets every other month as a large group for reporting and information, and in the odd months, we meet in three work groups. These three work groups are diligently and effectively addressing prevention, overdose reversal, and treatment.

Health Equity & Social Justice Workshops

KCHD along with Strong Beginnings continued their two-day Health Equity Social Justice Dialogue Workshops, reaching an additional 89 people and 20 agencies.

Over 440 Kent County employees have attended a workshop or presentation. KCHD began offering Equity and Social Justice Workshops twice a year to County employees as a new learning opportunity through the Kent County Learning and Development Center.

Environmental Health

- Animal Shelter
- Body Art Facility Inspections
- Campground Inspections
- Child Care/Adult Foster Care Facility Inspections
- Food Service Sanitation
- Housing Program
- Laboratory Services
- Land Development (Subdivisions and Site Condominiums)
- Nuisance Control Program
- Private Water Supply
- Public Swimming Pools
- Public Water Supply
- Radon Testing
- Sanitary Facility Evaluation
- Sewage Disposal System Regulation
- Toxic Substance Control
- Vacant Land Evaluation

Environmental Health programs cover a wide spectrum. This division protects people from illness and injury by assuring the quality of regulated environments. This division also oversees a lab and the Kent County Animal Shelter.

West Nile Virus

KCHD expanded its West Nile Virus (WNV) and Zika Virus Surveillance Program to include seven municipalities in the greater Grand Rapids area in 2017. This program consists of KCHD monitoring mosquitos for the WNV and/or Zika and the municipalities providing mosquito control where mosquito populations test positive for WNV. The monitoring program included the deployment of 11 traps to collect specimens for WNV testing and 5 traps to monitor for mosquito species associated with Zika. Educational materials have been created to distribute to residents to increase awareness.



KCHD Sanitarians Work to Ensure Healthy Food Practices

From your favorite pizza joint to fine dining, whether it's a tempting trout or a taco from a truck, the meal you eat at a Kent County Restaurant is safer because KCHD Sanitarians have been there before you.

In addition to the more than 1700 licensed restaurants that they inspect twice annually, KCHD Sanitarians also conducted inspections of 627 temporary food inspections at festivals and other public gatherings.

KCHD Sanitarians also worked nearly 300 complaint driven investigations at food facilities.

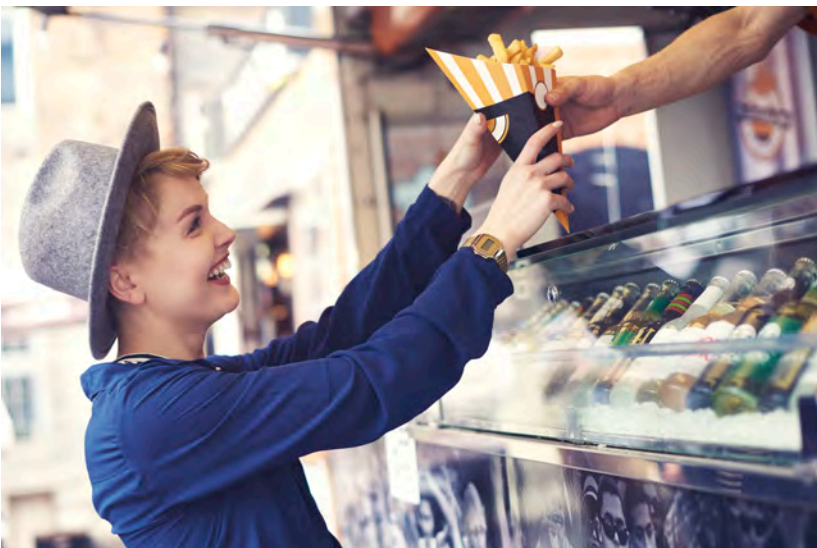
167 various enforcement actions were taken in 2017.

KCHD Sanitarians work with restaurants to help employees gain a better understanding of food safety and to help build a culture of cleanliness with establishments.

471 food facilities were honored by KCHD for their outstanding commitment to food safety in 2017.

2017 was a good year for restaurants in Kent County with many new food service facilities opening.

KCHD staff reviewed 145 plans for new facilities in 2017. That number is expected to grow in 2018.



Kent County Animal Shelter

Kent County Animal Shelter achieved a record placement rate for shelter pets in 2017. The animal shelter team was able to place 99% of all healthy cats and dogs and 83% of all treatable cats and dogs. The shelter's overall placement rate has increased by 37% since 2009.



DIVERSITY AND INCLUSION MATTER

Education

Refugee Health Services

Violence Prevention

OPPORTUNITIES

Housing Regulations & Sanitation

Children's Special Health Care Services

Development

COMMUNITY NURSING

Immunizations

Health Equity

Public Laboratory



HEALTH DEPARTMENT

Caring today for a healthy tomorrow

Prevention

Animal Control

Well Water Testing

MATERNAL INFANT HEALTH PROGRAM

WIC

Food Facility Inspections

Emergency Preparedness

Communicable Disease

Personal Health Services

ENVIRONMENTAL HEALTH

Ground Water Protection

Nurse Family Partnership

Community Clinical Services

Exceptional Public Service

Making a positive contribution

IMPROVING LIVES

And More....

...a look at our efforts to keep Kent County Healthy!



700 Fuller Ave. NE
Grand Rapids, MI 49503
accessKent.com/Health