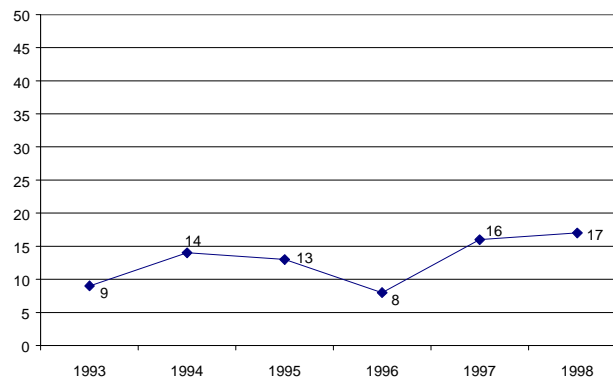


## Focus on Community Violence

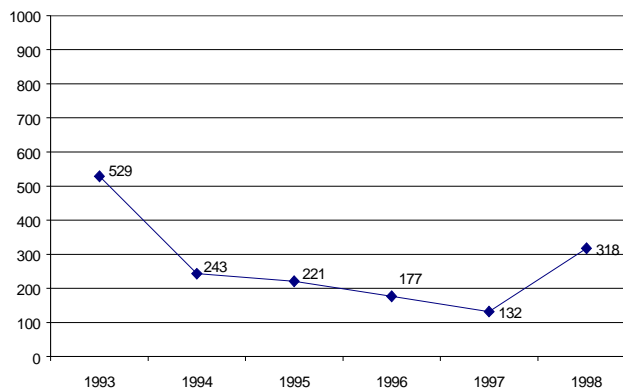
The Community HealthWatch report cards are developed by the Kent County Health Department to present health information that is being monitored by Healthy Kent 2010, a community committee dedicated to improving our county's health. In 1995, two Healthy Kent subcommittees were convened to establish violence prevention goals. In 1996, these groups merged to become the Kent County Violence Prevention Coalition. The Coalition has eight active Action Teams focusing on many initiatives aimed at reducing violent crimes in Kent County. The Coalition's mini-grant program funds community based organizations who implement programs to reduce these (below) and other types of violence.

### African American Male Homicide



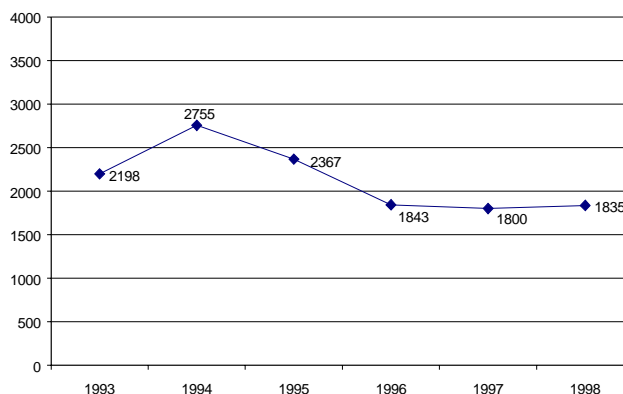
African American males comprise approximately 4% of Kent County's population but in 1998 accounted for 57% of Kent County homicides. When rates are computed based on the proportion of white and African American males in Kent County, **African American males** experience rates of **homicide** 20 times greater than white males.

### Sexual Assaults (Offenses)



Although reports of **sexual assaults** have increased in the last year, there has been an overall decrease in reports in the last five years -- from a high of 529 reported incidents in 1993. However, as is always the case with sexual assault data, it is difficult to determine if the numbers reflect an increase in reporting or an actual increase in the number of sexual assaults.

### Juvenile Crime Index (Arrests)



The **Juvenile Crime Index** reflects eight offenses (murder, rape, robbery, aggravated assault, burglary, larceny, motor vehicle theft, and arson) that are designated index crimes because of their "seriousness and frequency of occurrence." Based on their proportion of the population, juveniles ages 0-16 in Kent County are committing violent acts at a greater rate than adults. The U.S. Bureau of Justice reports that "there are two crime trends in America -- one for the young, and one for the mature, which are moving in opposite directions."

Data presented on graphs reflects actual numbers of incidents, not rates.