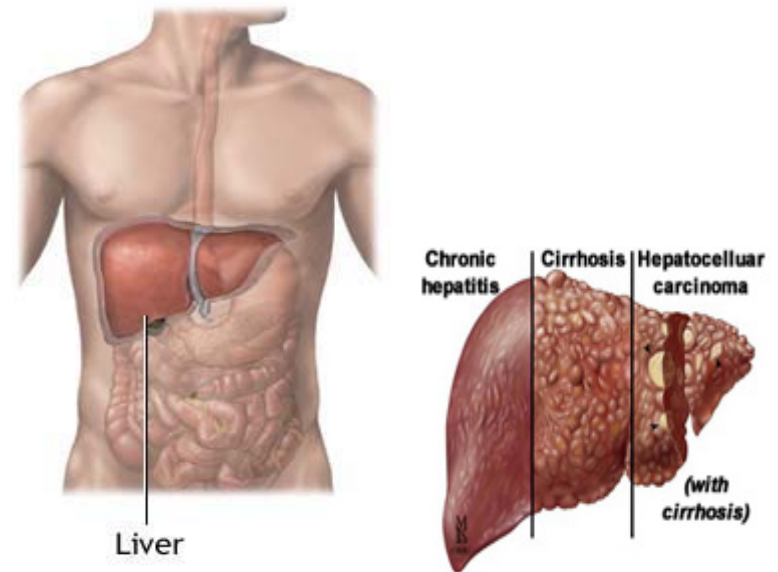


Health Care Resources For Uninsured/Underinsured Individuals At Risk For Hepatitis



© 2003 CPR, Inc. - All Rights Reserved

Government Medical Assistance Programs:

Children's Special Health Services

Phone : 1-800-359-3722

Children must have a qualifying medical condition such as liver disease and be 20 years old or under. The above phone number above can be called or contact the CSHCS office at the Kent County Health Department 632-7066.

Medicaid

Kent County Department of Human Services
(formerly the Family Independence Agency)
415 Franklin, S.E.
Grand Rapids MI 49507
Phone : (616) 247-6000

An application for Medicaid can be found at :
www.michigan.gov/dhs (Choose assistance programs from menu, then select Health Care coverage).

Michigan has many health care programs available to children, families, and adults who meet certain eligibility requirements. All of the health care programs in Michigan have income limits and some programs also have an asset limit. These income and asset limits vary with each program.

MICHILD

Phone: 1-888-988-6300
If you need an interpreter call: 1-800-988-6300

MICHild is a health insurance program. It is for uninsured children of Michigan's working families. MICHild services are provided by many HMOs and other health care plans throughout Michigan.

Medicare

Phone: 1-800-MEDICARE (1-800-633-4227)

Medicare is a Health Insurance Program for people 65 years of age and older, some disabled people under 65 years of age, and people with End-Stage Renal Disease (permanent kidney failure treated with dialysis or a transplant).

- **Part A (Hospital Insurance)** Most people do not have to pay for Part A.
- **Part B (Medical Insurance)** Most people pay monthly for Part B.

You can get Part A **at age 65** without having to pay premiums if:

- You are already receiving retirement benefits from Social Security or the Railroad Retirement Board.
- You are eligible to receive Social Security or Railroad benefits but have not yet filed for them.
- You or your spouse had Medicare-covered government employment.

If you are **under 65**, you can get Part A without having to pay premiums if:

- You have received Social Security or Railroad Retirement Board disability benefit for 24 months.

- You are a kidney dialysis or kidney transplant patient.

Social Security Office

Phone: 1-800-772-1213

www.socialsecurity.gov

Help to pay for Medicare expenses if elderly or disabled with low income and limited assets. To get these services you must have applied for Medicare Part A.

Veterans Affairs, Department of

Phone :To find out if you are eligible for VA services, call 1-877-222-VETS (1-877-222-8387)

VA is the largest single provider of medical care to people with hepatitis C in the United States. The VA National Hepatitis C Program works to ensure that military veterans with or at risk for hepatitis C receive the highest quality health care services.

Community Health Care Services:

Belknap Commons Health Center

(Cherry St. Health)

751 Lafayette NE

Grand Rapids, MI 49503

Medical: (616)-742-9945

Part of the Cherry Street network of Health Centers. Medical services including preventative care, diagnosing and treating acute illness and follow-up care. After-hours calls - twenty-four hours daily for urgent problems.

Baxter Community Health Clinic

935 Baxter

Grand Rapids, MI

Phone: 456-8593

Hours: 8 am- 5pm

www.grandrapids.org/baxter/

Health Clinic serving the Baxter neighborhood (Wealthy St. north, Franklin south, Fuller east, Eastern, west)

Breton Health Center of Metropolitan Hospital

1925 Breton Road SE

Grand Rapids, MI 49506

(616) 252-4100

The Breton Health Center, is home to residency teaching clinics for family practice, internal medicine, urology, surgery, OB/GYN, and ophthalmology.

Burton Health Center (Cherry St. Health Svcs.)

2133 Buchanan SW

Grand Rapids, MI 49507

Medical: (616)-247-3638

A program of Cherry Street Health Services that serves all grades from kindergarten to eighth, as well as children's families and members of the community throughout the entire year. Services offered: medical services, assistance with applications for MI Child and Healthy Kids program, bilingual staff available for Spanish speaking patients, after-hours calls- 24 hours daily for urgent problems.

Browning Claytor Health Center (St. Mary's)

1246 Madison SE
Grand Rapids, MI 49507
Phone: 616-913-8300

Office Hours: Monday - Friday 9:00 A.M. - 12:00 P.M., 1:00 P.M. – 4:30 P.M. Limited evening hours also available

Health care services for all persons, regardless of their ability to pay. They believe that no one should go without needed health care because they cannot afford it.

Catherine's Care Center (St. Mary's)

224 Carrier, NE
Grand Rapids, MI 49505
Phone: 616-336-8800

Primary health care, health education, and screening to the uninsured and underinsured, medically vulnerable residents of Grand Rapids' Northeast Side and the surrounding communities.

Cherry Street Health Services

550 Cherry St. SE
Grand Rapids, MI 49503
Phone: (616)-235-7272

A not-for-profit organization with 9 health centers offering comprehensive health services to low-income children and families.

Clinica Santa Maria (St. Mary's)

730 Grandville Avenue, SW
Grand Rapids, MI 49503
Phone: (616) 913-8400

www.smmmc.org/clinicalservices/healthcenters/index.shtml

Hours: 8:30 a.m. to 12:00 p.m.

Monday through Thursday 8:30 a.m. to 12:30 p.m.

Monthly Evening Clinic: Friday 6:00 p.m. to 9:00 p.m.

Primary health care to the Hispanic community's homeless, underserved and working poor. Clinica Santa Maria also serves the migrant population of Grand Rapids year-round for chronic conditions such as diabetes and arthritis.

Ferguson Adult Health Center (Cherry St.)

75 Sheldon SE
Grand Rapids, MI 49503
Phone: (616) 776-2400

This location addresses the needs of adults. The program has internal medicine specialists who deal with chronic illnesses and health care of adults. May be waiting period for new patients.

Grand Rapids Pediatrics (Cherry St.)

330 Barclay NE Suite GL 2
Grand Rapids, MI 49503
Medical: (616)-459-4314

The special needs program provides care to severely and chronically ill children. After-hours services are available twenty-four hours daily for urgent problems by calling the regular office number. Sliding fee scale available.

Heartside Clinic (St. Mary's)

61 Commerce Street, S.W.
Grand Rapids, MI 49503
Phone: (616) 643-3800
Office Hours: 7:30am–3pm

Heartside Clinic provides professional, comprehensive care for the homeless of greater Grand Rapids. The clinic also serves as a single point of contact for help with entitlement programs, assistance with acquiring food and housing, and to access to the mental health system and substance abuse treatment programs.

Health Intervention Services

15 Andre SE
Grand Rapids, MI 49507
Phone: 616-475-8446

A Christian medical center whose purpose is to bring hope, encouragement and practical assistance to underserved individuals and families through the provision of high quality medical care. Sliding fee scale available.

Kent Health Plan

Phone: (616) 726-8204
www.kenthealthplan.org

Service description: Health care services for Kent County residents who are not insured and who are not eligible for Medicaid, Medicare, MICHild or Healthy Kids. An eligible enrollee must meet income guidelines. Non U.S.citizens are eligible if they meet the above requirements.

Kent County Health Department

700 Fuller
Grand Rapids, MI 49503
Phone: (616) 632-7171

Appointments only: No Walk-In

Confidential testing for hepatitis B and C, sexually transmitted diseases and anonymous testing for HIV (AIDS). Available only at the [Fuller Clinic](#), 700 Fuller N.E. Personal Health Clinic hours: Monday, Tuesday, Wednesday, Friday, 8:00 a.m. to 5:00 p.m.; Thursday, 1:00 p.m. to 7:00 p.m. Services available to Kent County residents, age 13 and older. Clients may be required to meet certain eligibility criteria for free hepatitis testing.

Salvation Army Booth Clinic (Cherry St.)

1215 East Fulton Street
Grand Rapids, MI 49503
Medical: (616)-459-9468 ext 1311

The Salvation Army has been servicing pregnant teens and families for over 120 years. Services offered:

- Medical, with special sensitivity to young adults and their needs
-

Sparta Health Center (St. Mary's)

475 South State Street, PO Box 50

Sparta, MI 49345

Phone: 616-913-1300

Office Hours:

Monday 8:30 a.m. - 8:30 p.m. Tuesday, Wednesday, Thursday
8:30 - 5:00

p.m. Friday 8:30 - 12 (noon) **After Hours Center** :616-458-
2050

150 Jefferson Street, SE Grand Rapids (at the corner of
Jefferson and Cherry Streets)

Hours: Friday: 6:00 p.m. – 10:00 p.m.

Saturday: 9:00 a.m. – 9:00 p.m.

Sunday: 1:00 p.m. – 9:00 p.m.

As part of the Saint Mary's Mercy Medical Center Community Health Care System, the providers at Sparta Health Center have access to a widearray of specialists and services. There is a sliding payment scale for patients who have no insurance, or whose insurance is inadequate. All of our practitioners and most of our support staff are fluent in both Spanish and English. We have access to interpreter services for other languages as needed.

Union High School Health Center (Cherry St.)

1800 Tremont Blvd NW

Grand Rapids, MI

Medical: (616)-791-6593

A school based health center provides health services to high school students. There are approximately 1500 students, 9-12 grade that attend this school, Cherry Street Health Services provides medical, dental and counseling services to the adolescents who attend Union High.

Peter M. Wege Institute for Health & Learning (St. Mary's)

300 Lafayette SE, Suite 3000 and 4000

Grand Rapids, MI 49503

Phone : (616) 752- 6922

Serves the uninsured community via care by St. Mary's resident physicians.

Westside Health Center (Cherry St. Health Svcs.)

669 Stocking NW

Grand Rapids, MI

Medical: (616)-235-1480

A large following of Hispanic patients has prompted staffing to reflect the needs of the Latino community. Nearly all providers (Doctors and Dentists) nurses and support staff speak Spanish. The Native American Community's needs are also sensitively addressed here. Medical, including pediatrics, prenatal care, family practice and internal medicine. Assistance with applications for MI Child and Healthy Kids programs, Bilingual staff are available for Spanish speaking customers, on site laboratory and radiology services.

Drug Reimbursement Programs:

Gilead Patient Assistance Program

Phone: 800-GILEAD-5 (800-445-3235) between 8:00 a.m. and 5:00 p.m. Pacific Standard Time.

Gilead provides assistance for people who cannot afford to pay for all or part of the cost of Hepsera[®] (adefovir dipivoxil) for the treatment of chronic hepatitis B

Valeant Pharmaceuticals

Phone: 888-668-3393

Patient assistance for Infergen, a drug used for the treatment of chronic hepatitis C virus (HCV) infection in patients 18 years of age or older with compensated liver disease.

GlaxoWellcome Patient Assistance Program:

Bridges to Access

PO Box 29038

Phoenix, AZ 85038-9038

Phone : 1-866-PATIENT (1-866-728-4368)

Enrollment form and other patient specific-questions

Phone: All other questions - 1-888-825-5249

Monday - Friday, 8am - 8pm Eastern Time.

Glaxo helps patients gain access to the breakthrough medicines for Hepatitis B that they discover. They provide out-patient medications to eligible low-income patients residing in the United States who do not have prescription drug benefits.

Schering's Commitment To Care Program:

Phone: 800-521-7157

Schering provides patient assistance for the drugs Peg-Intron, Rebetol, and Intron A to people being treated for Hepatitis C that have low incomes and do not have prescription drug coverage.

Roche's HepLine Reimbursement Hotline

Phone : 877-PEGASYS (734-2797)

www.pegasys.com

Resources and patient assistance program for Hepatitis C. Postive patients.

Information on getting reimbursed for treatment.

National Institutes of Health –

Clinical Trials Database

<http://www.clinicaltrials.gov>

Michigan Hepatitis C Foundation - Support Group

Meets the first Thursday of the Month 7pm

Lacks Cancer Center at St. Mary's Hospital

Grand Conference Room

250 Cherry Street (SW corner of Cherry and Lafayette)

Grand Rapids, MI 49503

Phone: (616) 752-5200

Entrance: Main Entrance at 250 Cherry Street

Parking: Lacks Cancer Center Parking Lot on Cherry Street (Northeast corner of Cherry and Lafayette), Parking if Free!