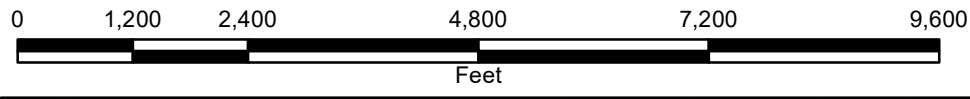


Office of the Kent
County Drain Commissioner



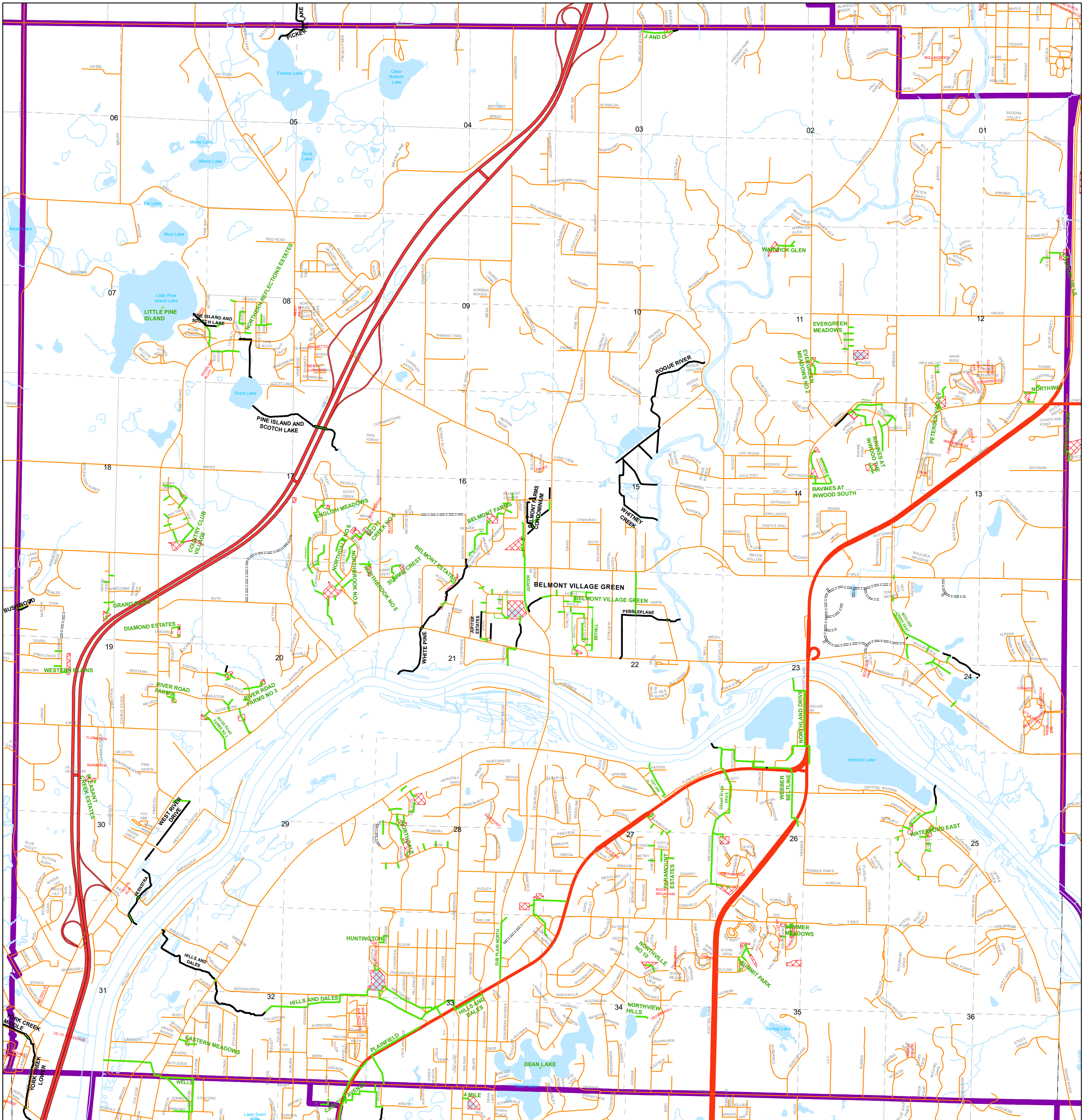
Plainfield Township

T.08N., R.11W.



September 22, 2023

	Culvert
	Flood Route
	Open Channel
	Storm Main
	Detention Basin



Kent County, MI makes no warranty, expressed or implied, regarding the accuracy, completeness or usefulness of information presented. Users of this information assume all liability for its fitness for a particular use.